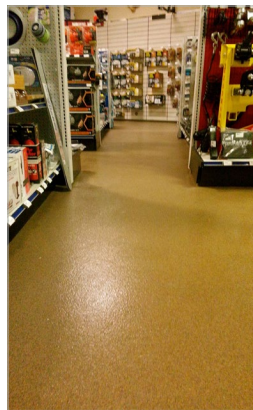
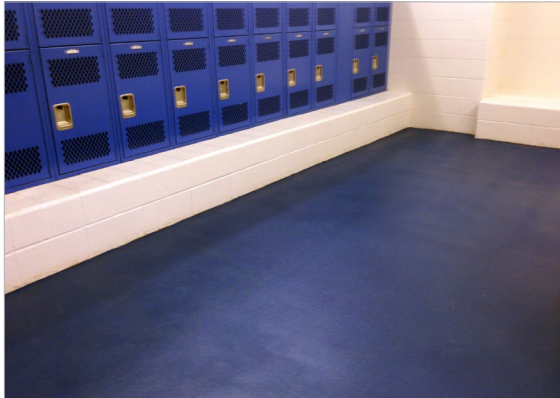


# HERMETIC™ Stout

Flooring System



CSI Division 9: Finishes - Flooring

**elite crete systems**

Engineered High Performance Surfaces & Flooring

# HERMETIC™ Stout Flooring Systems are

high build, double broadcast system using silica quartz aggregate and sealed with a pigmented top coat.

## TYPICAL AREAS OF USE

- Commercial kitchens
- Public restrooms
- Locker rooms
- Wet or dry processing areas
- Automobile service areas
- Medical
- Educational
- Warehouses
- Manufacturing areas

## ADVANTAGES

- Ease of maintenance
- Increased slip resistance in wet areas
- Hard with excellent abrasion resistance
- VOC free – CA 01350 air quality compliant
- Excellent stain & chemical resistant
- Antimicrobial, seamless & hygienic
- Fast set available for quicker turnaround time
- Wide array of colors

## SPECIFICATION OVERVIEW

- Name: HERMETIC™ Stout Floor
- Cured Thickness: @ 115 to 125 mils
- Surface preparation and detailed application instructions per manufacturer
- Manufacturer: Elite Crete Systems, Inc. +1-219-465-7671

## SAMPLE COLOR CHART



**NOTE:** The colors depicted on this technical document may not illustrate the exact color. Contact a technical support representative for a more accurate color sample. Custom colors available upon request. \*Novalac Only

## PHYSICAL PROPERTIES

(@ 73°F / 23°C, 7 day ambient cure as a coating)

PROPERTY	TEST	RESULT
VOC Content	N/A	0 g/l
Shore D Hardness	ASTM D-2240	80 to 82
Water Absorption (2hr boil)	ASTM D-570	0.04 %
Toxicity	N/A	None*
Heat Distortion Temperature	ASTM D-648	128 F / 53 C
Compressive Strength	ASTM D-695	12,500 psi minimum
Tensile Strength	ASTM D-638	2,100 psi minimum
Flexural Strength	ASTM D-790	4,500 psi minimum
Abrasion Resistance **	ASTM D-4060	30 mg loss max
Slant Shear	ASTM C-882	100% concrete failure
Flammability	ASTM D-635	Self-extinguishing
Flame Spread Rate (NFPA 101)	ASTM E-84	Class A
Elongation at Break	ASTM D-638	2-4 %
Chemical Resistance	Contact technical representative for chart	
Coefficient of Friction	Adjusted per requirement. Generally 0.50 to 0.80+	
COF Guidelines:	ADA Flat Surfaces	0.60
	ADA Inclined Surfaces	0.80
	OSHA	0.50
	NFPA	0.68

\* FDA, USDA, & CIFA Acceptable

\*\* CS-17 Wheel, 1 KG load, 1,000 cycles



# elite crete systems

### Elite Crete Systems, Inc.

1151 Transport Drive  
Valparaiso, Indiana 46383

Phone: +1.219.465.7671

Fax: +1.219.531.0898

Toll Free: 888-323-4445

Email: info@elitecrete.com

## www.elitecrete.com

The information herein is general information to assist our customers in determining whether our products are suitable for their specific applications. Our products are intended for sale to commercial and industrial customers. We require that customers should inspect and test our products before use to satisfy themselves as to the content and suitability for the applications they intend to use our products for. Nothing herein shall constitute any warranty expressed or implied, including any warranty of merchantability or fitness for a particular purpose, nor is replacement of our materials and in no event shall we be liable for incidental or consequential damages.