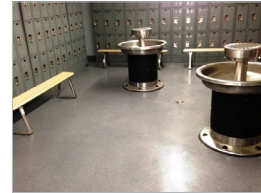
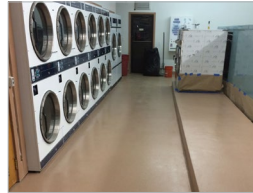
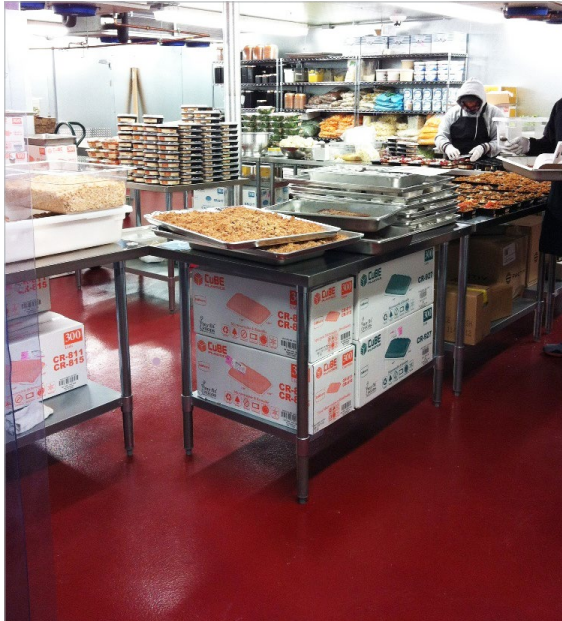
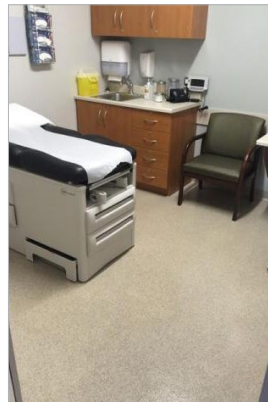
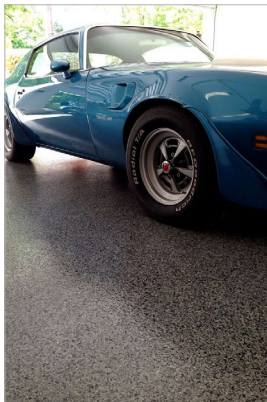


HERMETIC™ Quartz

Flooring System



CSI Division 9: Finishes - Flooring



elite crete systems
Engineered High Performance Surfaces & Flooring

HERMETIC™ Quartz Flooring Systems

are high build, double broadcast system using colored quartz aggregate and sealed with a protective top coat.

TYPICAL AREAS OF USE

- Commercial kitchens
- Public restrooms
- Locker rooms
- Showrooms
- Wet or dry processing areas
- Grocery stores
- Airports
- Automobile service areas
- Medical
- Educational

ADVANTAGES

- Ease of maintenance
- Aesthetic improvements & decorative floor finish
- Increase slip resistance in wet areas
- Hard with excellent abrasion resistance
- VOC free – CA 01350 air quality compliant
- Excellent stain & chemical resistance
- Antimicrobial, seamless & hygienic
- Fast set available for quicker turnaround time
- Wide array of color combinations

SPECIFICATION OVERVIEW

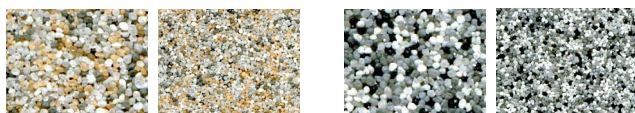
- Name: HERMETIC™ Quartz Floor
- Cured Thickness: @ 115 to 125 mils
- Surface preparation and detailed application instructions per manufacturer
- Manufacturer: Elite Crete Systems, Inc. +1-219-465-7671

SAMPLE COLOR CHART



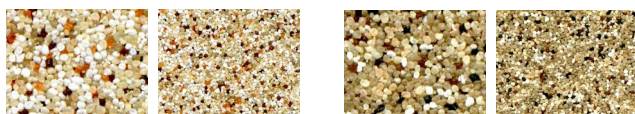
QB-1001

QB-1003



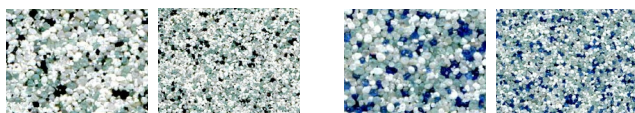
QB-1004

QB-1008



QB-1012

QB-1014



QB-1018

QB-1019



QB-1023

QB-1025

NOTE: The colors depicted on this technical document may not illustrate the exact color. Contact a technical support representative for a more accurate color sample. Custom colors available upon request.

PHYSICAL PROPERTIES

(@ 73°F / 23°C, 7 day ambient cure as a coating)

PROPERTY	TEST	RESULT
VOC Content	N/A	0 g/l
Shore D Hardness	ASTM D-2240	80 to 82
Water Absorption (2hr boil)	ASTM D-570	0.04 %
Toxicity	N/A	None*
Heat Distortion Temperature	ASTM D-648	128 F / 53 C
Compressive Strength	ASTM D-695	12,500 psi
Tensile Strength	ASTM D-638	3,300 psi
Flexural Strength	ASTM D-790	4,700 psi
Abrasion Resistance **	ASTM D-4060	17 mg loss
Slant Shear	ASTM C-882	100% concrete failure
Flammability	ASTM D-635	Self-extinguishing
Flame Spread Rate (NFPA 101)	ASTM E-84	Class A
Elongation at Break	ASTM D-638	4.2 %
Chemical Resistance	Contact technical representative for chart	
Coefficient of Friction	Adjusted per requirement. Generally 0.50 to 0.80+	
COF Guidelines:	ADA Flat Surfaces	0.60
	ADA Inclined Surfaces	0.80
	OSHA	0.50
	NFPA	0.68

* FDA, USDA, & CIFA Acceptable

** CS-17 Wheel, 1 KG load, 1,000 cycles



elite crete systems

Elite Crete Systems, Inc.

1151 Transport Drive
Valparaiso, Indiana 46383

Phone: +1.219.465.7671 Fax: +1.219.531.0898
Toll Free: 888-323-4445
Email: info@elitecrete.com

www.elitecrete.com

The information herein is general information to assist our customers in determining whether our products are suitable for their specific applications. Our products are intended for sale to commercial and industrial customers. We require that customers should inspect and test our products before use to satisfy themselves as to the content and suitability for the applications they intend to use our products for. Nothing herein shall constitute any warranty expressed or implied, including any warranty of merchantability or fitness for a particular purpose, nor is replacement of our materials and in no event shall we be liable for incidental or consequential damages.