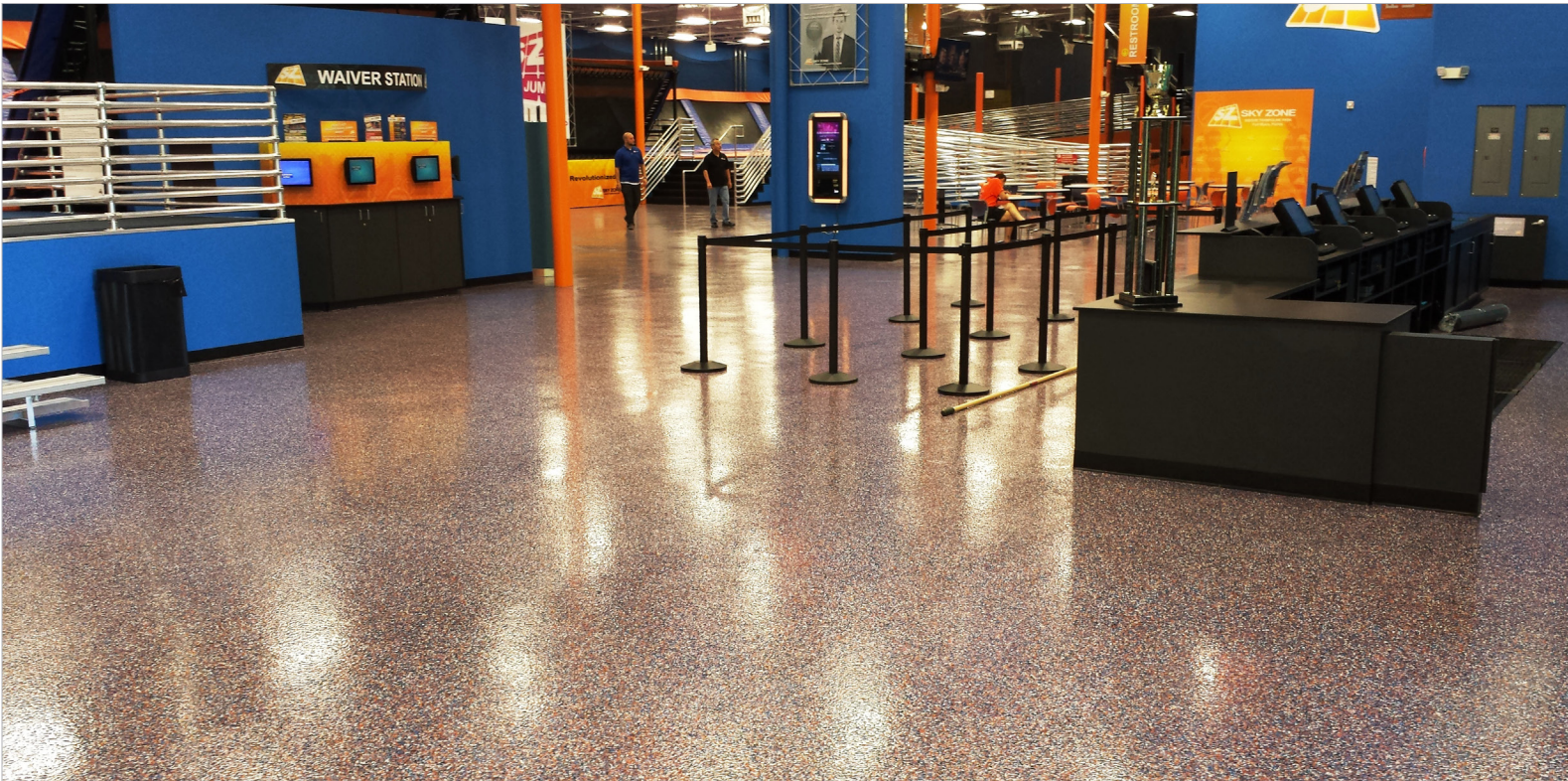




HERMETIC™ Flake

Flooring Systems



elite crete systems
ENGINEERED HIGH PERFORMANCE SURFACES & FLOORING

HERMETIC™ Flake Flooring Systems

are durable, seamless, chemical resistant floor providing adjustable levels of slight texture and color to match any design theme or surroundings.

TYPICAL AREAS OF USE

- Public areas
- Grocery stores
- Airports
- Showrooms
- Retail
- Theme parks
- Hospitality
- Hospitals
- Educational
- Automobile showrooms

ADVANTAGES

- Ease of maintenance
- Aesthetic improvements
- Hygienic seamless finish
- Hard and abrasion resistant
- VOC free options - CA 01350 air quality compliant
- Stain and chemical resistant
- Antimicrobial
- Satin or gloss finish
- Fast set available for quicker turnaround time
- Special colors can match design or preferred colors

For additional information, visit: elitecrete.com

Elite Crete Systems, Inc.

1151 Transport Drive
Valparaiso, Indiana 46383

Phone: +1.219.465.7671
Toll Free: 888-323-4445
Email: info@elitecrete.com
elitecrete.com

SPECIFICATION OVERVIEW

- Name: HERMETIC™ Flake Flooring System
- Finish: Textured
- Surface preparation and detailed application instructions per manufacturer
- Manufacturer: Elite Crete Systems, +1-219-465-7671

PHYSICAL PROPERTIES

(@ 73°F / 23°C, 7 day ambient cure as a coating)

PROPERTY	TEST	RESULT
VOC Content	N/A	0-25 g/l
Shore D Hardness	ASTM D2240	76-93
Water Absorption (2hr boil)	ASTM D570	0.3-0.33 %
Toxicity	N/A	None*
Heat Distortion Temperature	ASTM D648	120-135 F / 49-57 C
Compressive Strength	ASTM D695	7,300-14,100 psi
Tensile Strength	ASTM D638	1,376-7,100 psi
Flexural Strength	ASTM D790	2,840-11,100 psi
Abrasion Resistance **	ASTM D4060	9.5-16 mg loss
Slant Shear	ASTM C882	100% concrete failure
Flammability	ASTM D635	Self-extinguishing
Flame Spread Rate (NFPA 101)	ASTM E84	Class A
Elongation at Break	ASTM D638	3.5-9.2 %
Chemical resistance	Contact technical representative for chart	
Coefficient of Friction	Adjusted per requirement. Generally 0.50 to 0.80+	
COF Guidelines:	ADA Flat Surfaces	0.60
	ADA Inclined Surfaces	0.80
	OSHA	0.50
	NFPA	0.80

* FDA, USDA, & CIFA Acceptable

** CS-17 Wheel, 1 KG load, 1,000 cycles

The information herein is general information to assist our customers in determining whether our products are suitable for their specific applications. Our products are intended for sale to commercial and industrial customers. We require that customers should inspect and test our products before use to satisfy themselves as to the content and suitability for the applications they intend to use our products for. Nothing herein shall constitute any warranty expressed or implied, including any warranty of merchantability or fitness for a particular purpose, nor is replacement of our materials and in no event shall we be liable for incidental or consequential damages.