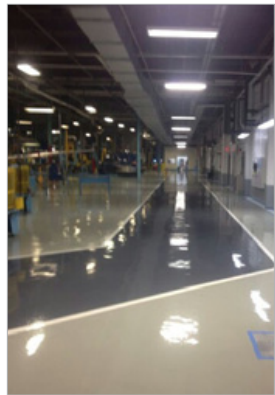
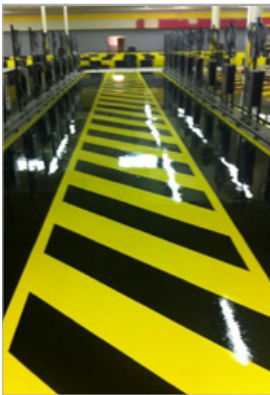


HERMETIC™ Paramount HD

Flooring System



CSI Division 9: Finishes - Flooring



elite crete systems

Engineered High Performance Surfaces & Flooring

HERMETIC™ Paramount HD Floor is a high build, heavy duty, trowel applied resinous mortar flooring system engineered for industrial applications. Formulated for extreme abrasion, wear and chemical resistance.

TYPICAL AREAS OF USE

- Warehouses
- Manufacturing areas
- Automotive service areas
- High & heavy traffic areas
- Concrete floor restoration

ADVANTAGES

- Ease of maintenance
- Aesthetic improvements
- Increases the surface strength of the substrate
- Hard and abrasion resistant
- VOC free – CA 01350 air quality compliant
- Stain and chemical resistant
- Fast set available for quicker turn around time

SPECIFICATION OVERVIEW

- Name: HERMETIC™ Paramount HD Floor
- Cured Thickness: @ 225 to 250 mils
- Surface preparation and detailed application instructions per manufacturer
- Manufacturer: Elite Crete Systems, Inc. +1-219-465-7671

SAMPLE COLOR CHART



NOTE: The colors depicted on this technical document may not illustrate the exact color. Contact a technical support representative for a more accurate color sample. Custom colors available upon request. *** Novalac Only**

PHYSICAL PROPERTIES

(@ 73°F / 23°C, 7 day ambient cure as a coating)

PROPERTY	TEST	RESULT
VOC Content	N/A	0 g/l
Shore D Hardness	ASTM D-2240	83 to 90+
Water Absorption (2hr boil)	ASTM D-570	0.10 %
Toxicity	N/A	None*
Heat Distortion Temperature	ASTM D-648	136 F / 54 C
Compressive Strength	ASTM D-695	14,500 psi minimum
Tensile Strength	ASTM D-638	3,300 psi
Flexural Strength	ASTM D-790	4,400 psi
Abrasion Resistance **	ASTM D-4060	0.2 mg loss
Slant Shear	ASTM C-882	100% concrete failure
Flammability	ASTM D-635	Self-extinguishing
Flame Spread Rate (NFPA 101)	ASTM E-84	Class A
Elongation at Break	ASTM D-638	3.2 %
Chemical Resistance	Contact technical representative for chart	
Coefficient of Friction	Adjusted per requirement. Generally 0.80	
COF Guidelines:	ADA Flat Surfaces	0.60
	ADA Inclined Surfaces	0.80
	OSHA	0.50
	NFPA	0.68

* FDA, USDA, & CIFA Acceptable ** CS-17 Wheel, 1 KG load, 1,000 cycles



Elite Crete Systems, Inc.

1151 Transport Drive
Valparaiso, Indiana 46383

Phone: +1.219.465.7671 Fax: +1.219.531.0898

Toll Free: 888-323-4445

Email: info@elitecrete.com

www.elitecrete.com

The information herein is general information to assist our customers in determining whether our products are suitable for their specific applications. Our products are intended for sale to commercial and industrial customers. We require that customers should inspect and test our products before use to satisfy themselves as to the content and suitability for the applications they intend to use our products for. Nothing herein shall constitute any warranty expressed or implied, including any warranty of merchantability or fitness for a particular purpose, nor is replacement of our materials and in no event shall we be liable for incidental or consequential damages.