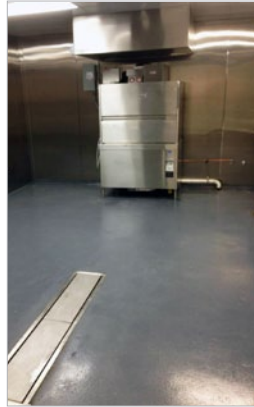
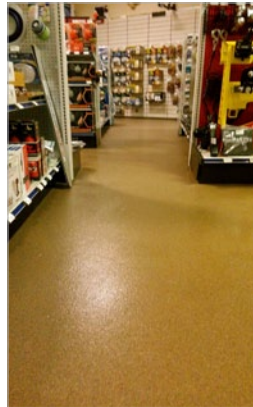
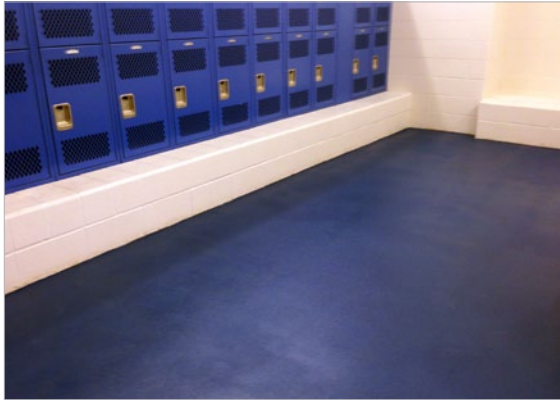


HERMETIC™ Stout

Flooring System



CSI Division 9: Finishes - Flooring

elite crete systems

Engineered High Performance Surfaces & Flooring

HERMETIC™ Stout Floor is a high build, double broadcast system using silica quartz aggregate and sealed with a pigmented top coat.

TYPICAL AREAS OF USE

- Commercial kitchens
- Public restrooms
- Locker rooms
- Wet or dry processing areas
- Automobile service areas
- Medical
- Educational
- Warehouses
- Manufacturing areas

ADVANTAGES

- Ease of maintenance
- Increased slip resistance in wet areas
- Hard with excellent abrasion resistance
- VOC free – CA 01350 air quality compliant
- Excellent stain & chemical resistant
- Anti-microbial, seamless & hygienic
- Fast set available for quicker turn around time
- Wide array of colors

SPECIFICATION OVERVIEW

- Name: HERMETIC™ Stout Floor
- Cured Thickness: @ 115 to 125 mils
- Surface preparation and detailed application instructions per manufacturer
- Manufacturer: Elite Crete Systems, Inc. +1-219-465-7671

SAMPLE COLOR CHART



NOTE: The colors depicted on this technical document may not illustrate the exact color. Contact a technical support representative for a more accurate color sample. Custom colors available upon request. *Novalac Only

PHYSICAL PROPERTIES

(@ 73°F / 23°C, 7 day ambient cure as a coating)

| PROPERTY | TEST | RESULT |
|------------------------------|---|-----------------------|
| VOC Content | N/A | 0 g/l |
| Shore D Hardness | ASTM D-2240 | 80 to 82 |
| Water Absorption (2hr boil) | ASTM D-570 | 0.04 % |
| Toxicity | N/A | None* |
| Heat Distortion Temperature | ASTM D-648 | 128 F / 53 C |
| Compressive Strength | ASTM D-695 | 12,500 psi minimum |
| Tensile Strength | ASTM D-638 | 2,100 psi minimum |
| Flexural Strength | ASTM D-790 | 4,500 psi minimum |
| Abrasion Resistance ** | ASTM D-4060 | 30 mg loss max |
| Slant Shear | ASTM C-882 | 100% concrete failure |
| Flammability | ASTM D-635 | Self-extinguishing |
| Flame Spread Rate (NFPA 101) | ASTM E-84 | Class A |
| Elongation at Break | ASTM D-638 | 2-4 % |
| Chemical Resistance | Contact technical representative for chart | |
| Coefficient of Friction | Adjusted per requirement. Generally 0.50 to 0.80+ | |
| COF Guidelines: | ADA Flat Surfaces | 0.60 |
| | ADA Inclined Surfaces | 0.80 |
| | OSHA | 0.50 |
| | NFPA | 0.68 |

* FDA, USDA, & CIFA Acceptable ** CS-17 Wheel, 1 KG load, 1,000 cycles



Elite Crete Systems, Inc.

1061 Transport Drive
Valparaiso, Indiana 46383

Phone: +1.219.465.7671 Fax: +1.219.531.0898

Toll Free: 888-323-4445

Email: info@elitecrete.com

www.elitecrete.com

The information herein is general information to assist our customers in determining whether our products are suitable for their specific applications. Our products are intended for sale to commercial and industrial customers. We require that customers should inspect and test our products before use to satisfy themselves as to the content and suitability for the applications they intend to use our products for. Nothing herein shall constitute any warranty expressed or implied, including any warranty of merchantability or fitness for a particular purpose, nor is replacement of our materials and in no event shall we be liable for incidental or consequential damages.